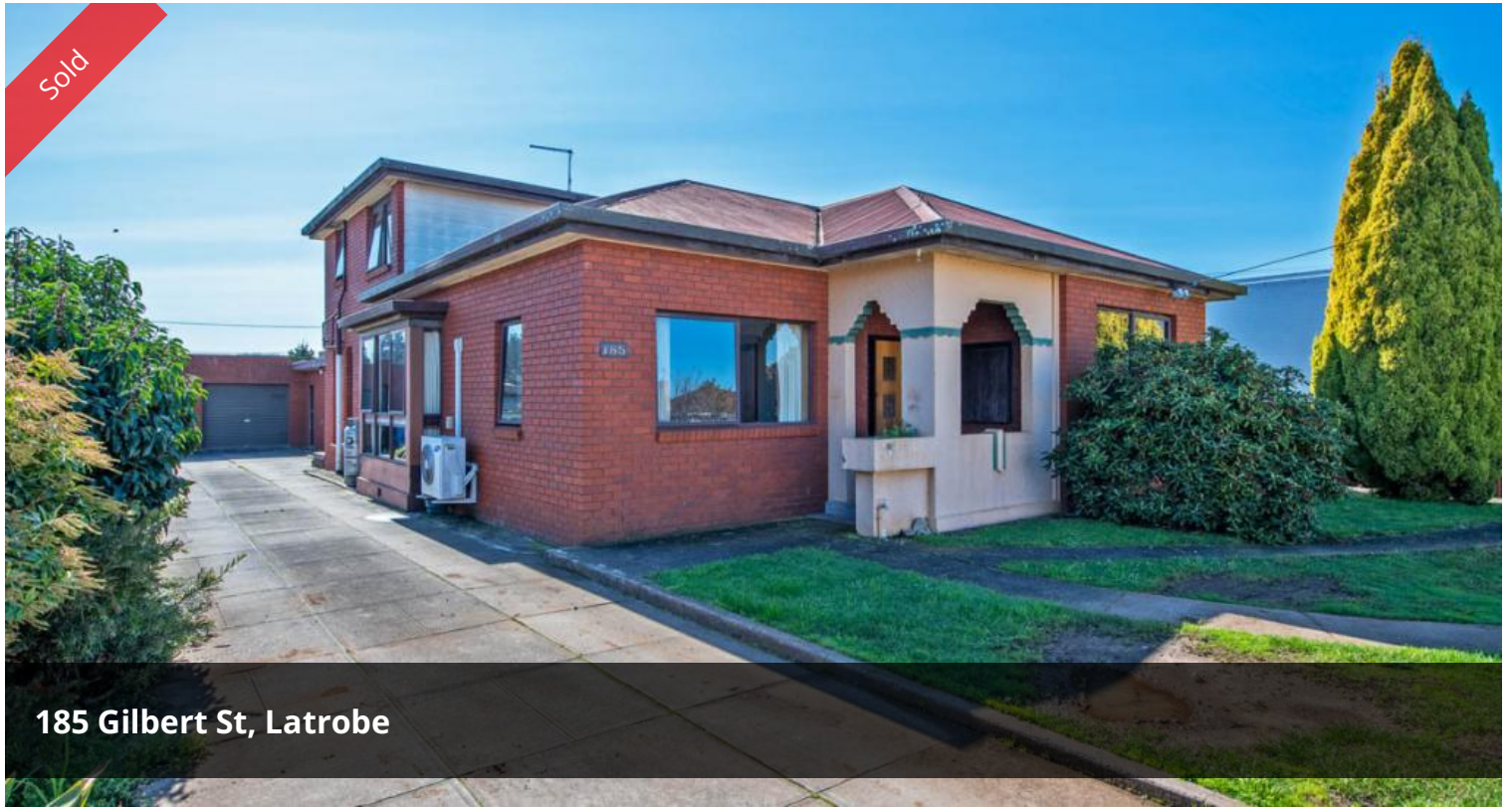


Sold



185 Gilbert St, Latrobe



ENORMOUS OPPORTUNITY IN THE HEART OF LATROBE

Built in the 1940's, and just a short stroll into the heart of Latrobe, this substantial home set on over 1/4 acre (1071sqm) represents a genuine opportunity for those of you who know the growth potential that Tasmania's North-West offers.

Now, we aren't going to sugar-coat this property - it's big and solid, it's perfectly located and has housed the same family comfortably for over 14 years - however it is an unfinished symphony and ready for someone to take advantage of the commercial/residential benefits.

The home retains much of its original charm with timber floors and finishes, high ceilings and an abundance of space.

It comprises:

- 4 bedrooms (two up, two down)
- 3 bathrooms (one up, one down, one off the outdoor entertaining area)
- Fully decked out modern kitchen, which is the hub of this home, with an impressive gas oven.
- Huge dining/lounge (called the 'long room')

🛏 4 🚿 3 🚗 6 📏 1,071 m²

Price	SOLD
Property Type	Residential
Property ID	22
Land Area	1,071 m ²
Floor Area	323 m ²

AGENT DETAILS

Craig Heppell - 0400 180 515

OFFICE DETAILS

Ulverstone Real Estate
0400 180 515

 **ULVERSTONE**
REAL ESTATE

- Living room off the kitchen with wood heater
- Covered outdoor living area
- Huge fenced yard
- Double garage and workshop
- Plenty of storage space

With the Mersey Hospital around the corner; cafe's, pubs, shops a stroll down the road and Devonport a quick 10 minute drive away - you cannot beat the location!

Interested?

You should be!

Call today to arrange your inspection*.

*Covid Check-In protocols apply to all persons attending inspections at this property.

The above information provided has been furnished to us by the vendor/s. We have not verified whether or not that information is accurate and do not have any belief in one way or the other in its accuracy. We do not accept any responsibility to any person for its accuracy and do no more than pass it on. All interested parties should make and rely upon their own inquiries in order to determine whether or not this information is in fact accurate.