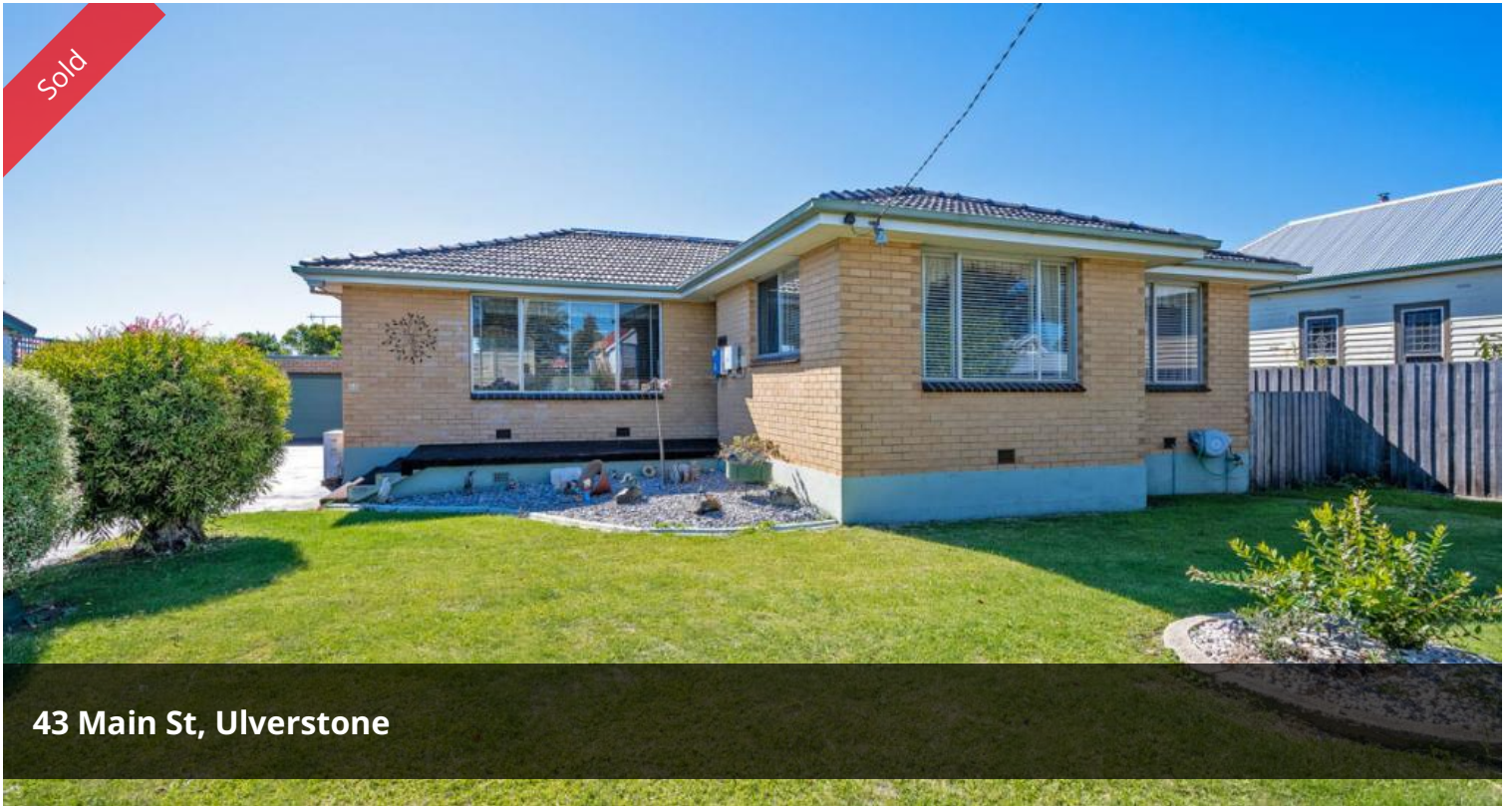


Sold



43 Main St, Ulverstone



## SOLID & SPACIOUS ON A QUARTER ACRE - WALK TO TOWN AND BEACH

SELLERS SAY, "BRING AN OFFER."

This solid, well maintained home on over 1000sqm represents a rare opportunity for a savvy buyer or investor to buy into one of Ulverstone's most tightly held and popular precincts.

This property could be your private urban oasis with room for some chooks, a vege patch and space to breath or explore the distinct possibility of using the block size to subdivide and develop (STCA).

The property comprises:

- Three generous bedrooms
- Well appointed bathroom
- Large, functional and sundrenched kitchen
- Spacious dining area
- Warm and roomy living area
- Internal Laundry
- Separate mud/utility room
- Double Auto Garage with 'Australiana' man cave/bar at the back
- High roof caravan or carport

🛏 3 🗺 1 🚗 8 🏠 1,012 m2

<b>Price</b>	SOLD
<b>Property Type</b>	Residential
<b>Property ID</b>	25
<b>Land Area</b>	1,012 m2
<b>Floor Area</b>	120 m2

### AGENT DETAILS

Craig Heppell - 0400 180 515

### OFFICE DETAILS

Ulverstone Real Estate  
0400 180 515

 **ULVERSTONE**  
REAL ESTATE

- Extra-wide drive
- Roof top solar system talking in the rear northerly aspect
- Large lockable garden shed
- Fully fenced

Yet, the location is as equally impressive: Just five minutes walk into the thriving heart of Ulverstone CBD - grocery and specialty shops, cafes, pubs, professional services; and and eight minute walk to beaches, parks, sports grounds and the beautiful Leven River foreshore.

Think about this one for too long and it may be too late.

Call Craig today!

*The above information provided has been furnished to us by the vendor/s. We have not verified whether or not that information is accurate and do not have any belief in one way or the other in its accuracy. We do not accept any responsibility to any person for its accuracy and do no more than pass it on. All interested parties should make and rely upon their own inquiries in order to determine whether or not this information is in fact accurate.*