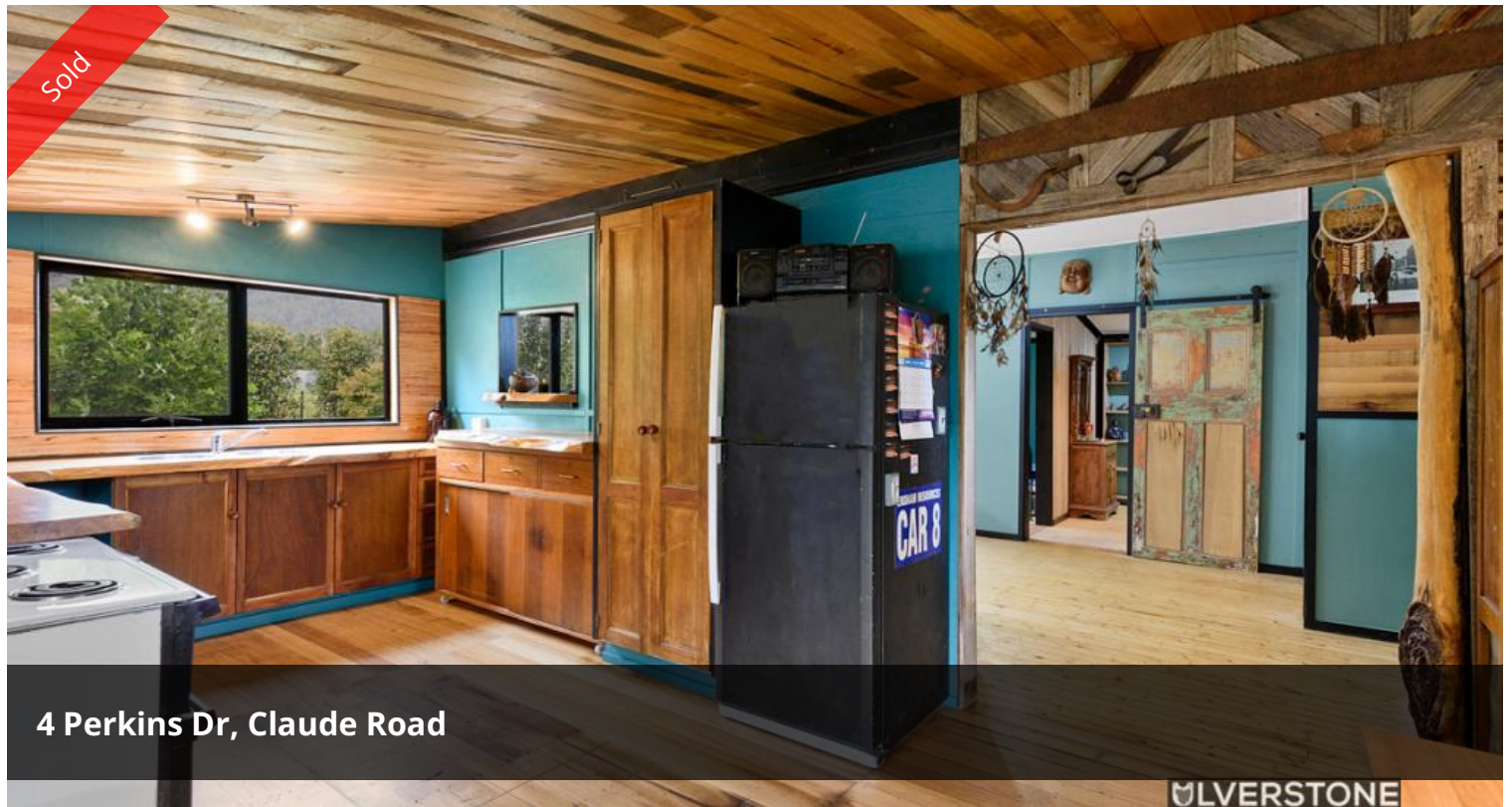


Sold



4 Perkins Dr, Claude Road

ULVERSTONE



## THIS COUNTRY CHARMER HAS IT ALL!

Having looked through and sold hundreds of homes, there are some that really make you stop and think, "We could live here."

This is one of them! And we guarantee you'll say the same thing too.

Nestled peacefully under the gaze of magnificent Mt Roland is this impressive, craftsman finished country cottage that offers a perfect blend of yesteryear character and modern living.

Set on a flat, fenced 1119sqm block (1/4 acre) it offers;

- Three generous bedrooms
- Two bathrooms including ensuite - the main bed/ensuite has a separate entry if you are thinking B&B or AirB&B.
- Amazing eat-in country kitchen
- Lounge room with woodfire heater
- Large covered front deck
- Workshop at the rear leading onto a carport that can house two vehicles, plus plenty of off-street parking.
- Operational bore for all your water needs and onsite septic system.
- Double glazed windows

🛏 3 📶 2 🚗 4 🏠 1,119 m2

<b>Price</b>	SOLD
<b>Property Type</b>	Residential
<b>Property ID</b>	49
<b>Land Area</b>	1,119 m2
<b>Floor Area</b>	124 m2

### AGENT DETAILS

Craig Heppell - 0400 180 515

### OFFICE DETAILS

Ulverstone Real Estate  
0400 180 515

 **ULVERSTONE**  
REAL ESTATE

- Amazing timberwork throughout
- Gas Hot Water System

The location has a lot going for it as well...

Five minutes into Sheffield, thirty minutes to Devonport and the Spirit, and an hour to Cradle Mountain.

With the growing interest in mountain biking and tourism in general, this home represents a serious opportunity in that regard, or can be your own comfy hideaway.

Get in touch today!

*The above information provided has been furnished to us by the vendor/s. We have not verified whether or not that information is accurate and do not have any belief in one way or the other in its accuracy. We do not accept any responsibility to any person for its accuracy and do no more than pass it on. All interested parties should make and rely upon their own inquiries in order to determine whether or not this information is in fact accurate.*