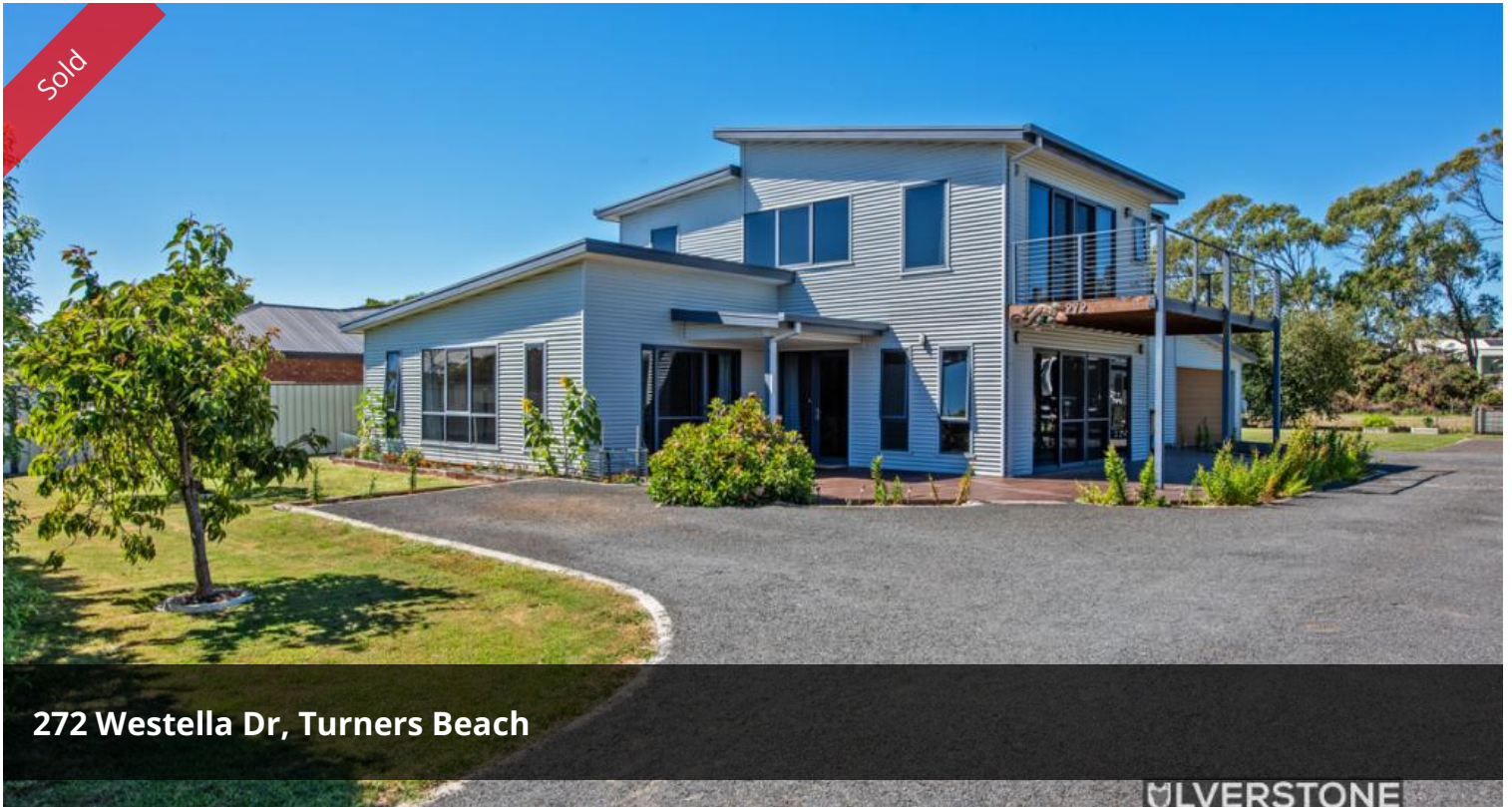


Sold



272 Westella Dr, Turners Beach

ULVERSTONE



## THE BIG ALLROUNDER!

What a location! What a home!

All roads lead to one of Tasmania's most popular Northwest suburbs...Turners Beach.

And just a ten-minute walk to THE BEACH is this opportunity filled home on half an acre - yep, over 2000sqm of flat, useable land.

There's loads of space for your van, motorhome, truck, equipment or even a serious shed!

The north facing home itself is generous in its proportions and comprises:

- Three extra-large bedrooms, two downstairs, with main bed upstairs.
- Main bathroom along with separate powder room downstairs; large ensuite service the main bedroom upstairs. (2.5 bathrooms)
- Large kitchen with equally generous dining space.
- BIG formal loungeroom leading out to decking at front and western side of the home.
- Fantastic upstairs mezzanine level living area with wet bar and sundrenched deck.
- Oversized internal/auto garage with space for workshop or storage.

🛏 3 🗺 2 🚗 6 🏠 2,028 m2

<b>Price</b>	SOLD
<b>Property Type</b>	Residential
<b>Property ID</b>	72
<b>Land Area</b>	2,028 m2
<b>Floor Area</b>	272 m2

### AGENT DETAILS

Craig Heppell - 0400 180 515

### OFFICE DETAILS

Ulverstone Real Estate  
0400 180 515

 **ULVERSTONE**  
REAL ESTATE

- Around two-thirds of the block is fenced with easy access for vehicles etc.

Ten minutes to Ulverstone CBD to the west and similar distance to Devonport (east), you are never far from all the amenities you could need.

We are keen to show you this fine property and the sellers are keen to hear your offers.

Call, email, message, smoke signal us to arrange your inspection.

*The above information provided has been furnished to us by the vendor/s. We have not verified whether or not that information is accurate and do not have any belief in one way or the other in its accuracy. We do not accept any responsibility to any person for its accuracy and do no more than pass it on. All interested parties should make and rely upon their own inquiries in order to determine whether or not this information is in fact accurate.*